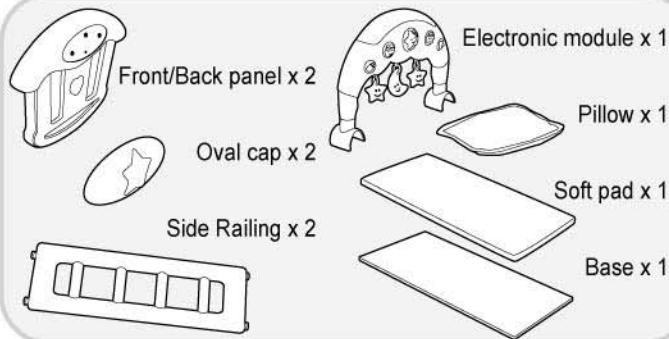


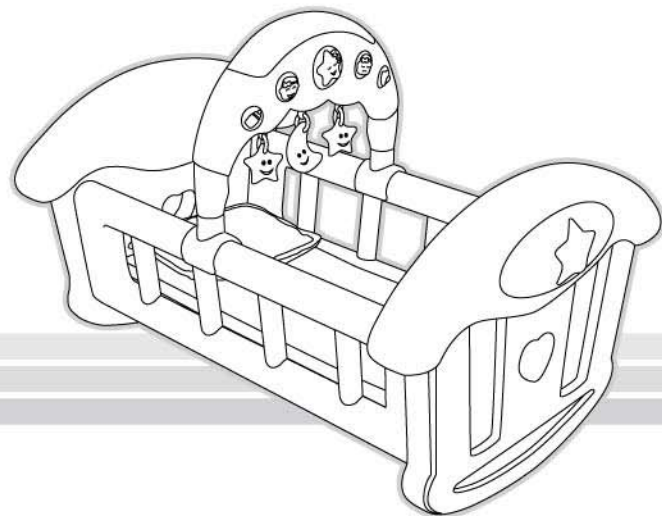
Sleepytime Cradle includes:



Sleepytime Cradle™

ASSEMBLY INSTRUCTIONS

No Tools Required



Batteries



3 AA batteries are included for demonstration purposes and may need to be replaced by consumer. Alkaline batteries are recommended. To replace batteries, use Phillips screwdriver to loosen screw on battery compartment cover. Lift cover and replace batteries. Once batteries are replaced, close cover and tighten screw.



WARNING:

Sleepytime Cradle and Accessories are toys designed to be used with dolls and stuffed animals only. Under no circumstances should product be used with real babies. Do not mix old and new batteries. Do not mix alkaline, standard (carbon-zinc) or rechargeable (nickel-cadmium) batteries. Requires 3 x 1.5V size AA batteries.

For Company Information Visit: www.jctoy.com

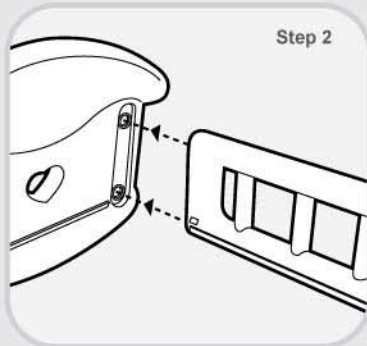
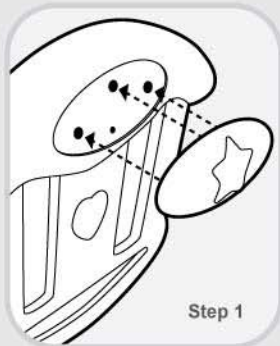
Step 1: (If Needed)

Match the oval cap to the oval opening on the front panel and snap into place. Repeat for back panel.

Step 2:

Snap side railing into front and back panel as shown. Repeat for both sides.

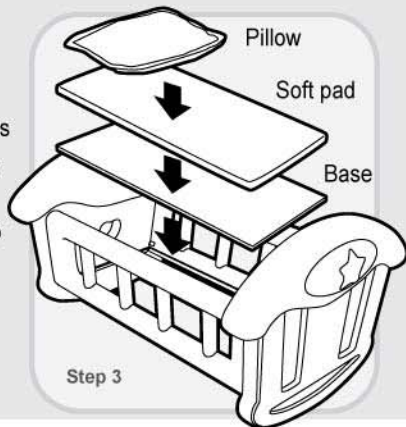
*Once railings are attached, they cannot be removed.



Step 3:

Place base into cradle and press down by applying light pressure until it fits into place.

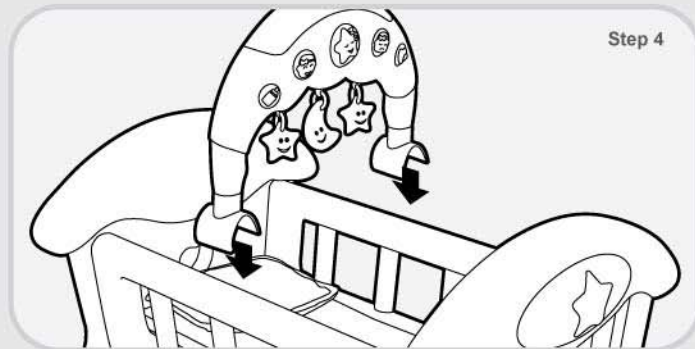
Place soft pad and pillow on top of base.



Step 4:

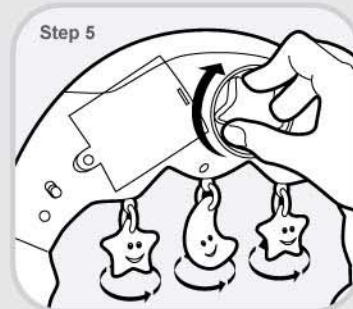
Fit electronic module on to cradle by securing U shaped grip on each side of module to the railing. To change position of module slide both grips of electronic module simultaneously until desired position is found.

To remove electronic module, slowly detach U shaped grips simultaneously until module is detached.



Step 5:

To use real motion mobile wind star shaped knob on rear of electronic module. Do not over tighten as this may cause damage to mobile.



Note:

Before allowing child to play with toy ensure that all steps have been followed and that all parts are secure.