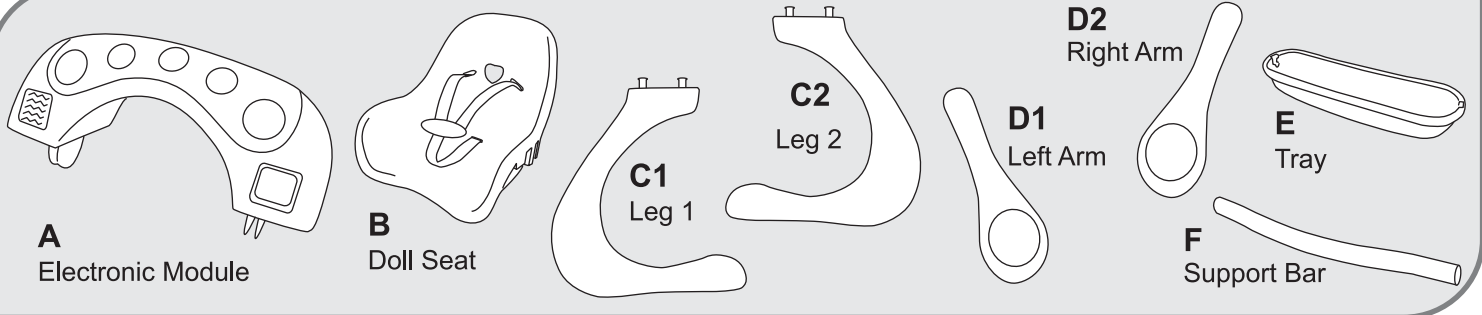


If parts are missing, do not return to store. Call 1-800-422-2244 or contact us at info@jctoys.com

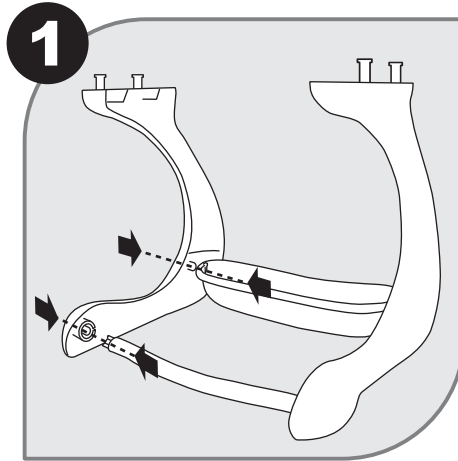
No Tools Required



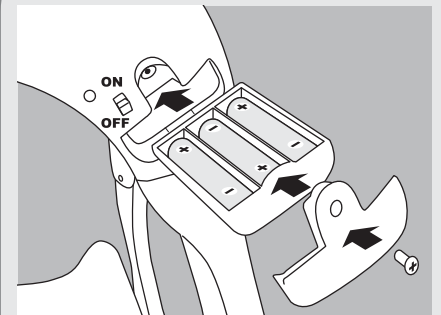
STEP 1:

Take **Leg 1 (C1)** and attach **Tray (E)** and **Support Bar (F)** to leg as shown.

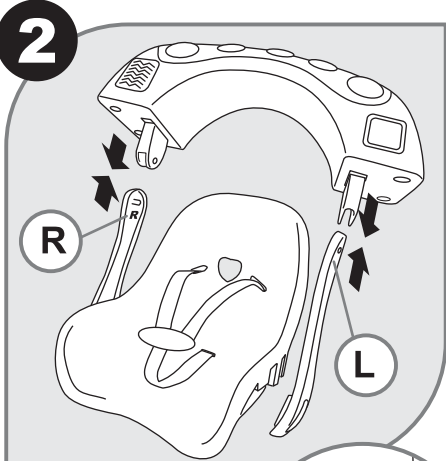
Repeat for **Leg 2 (C2)**. Once legs are secured, place on a level surface as shown.



To Install or Replace Batteries



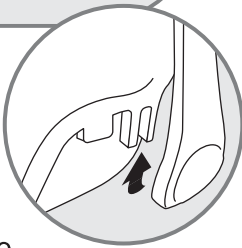
3 AA batteries are included for demonstration purposes and may need to be replaced by consumer. Alkaline batteries are recommended. To replace batteries, use a Phillips screwdriver to loosen screw on battery compartment. When done, replace cover and tighten screw.



STEP 2:

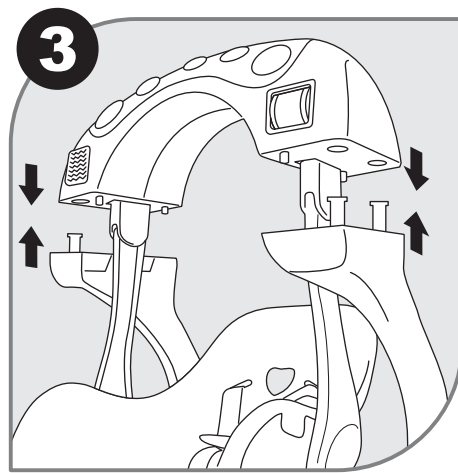
Holding **Electronic Module (A)**, with buttons facing you, take **Left Arm (D1)**, indicated by the letter "L" on the inside of arm, and click into the left blue clip protruding from the bottom of the **Electronic Module (A)**. Repeat with **Right Arm (D2)**. Use photo as reference. Once in place, pull on the arms lightly to make sure that they are securely placed.

Next, take the **Doll Seat (B)** and slide into bottom parts of the **Arms (D)** as shown.

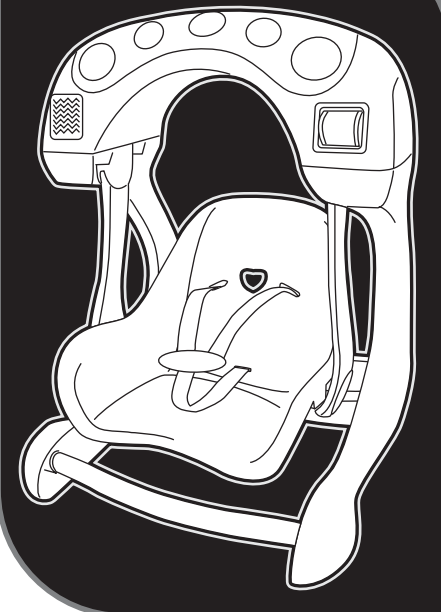


STEP 3:

Attach **Electronic Module (A)** and **Doll Seat (B)** from Step 2 to **Legs 1 and 2 (C1 and C2)** as shown. Once **Electronic Module (A)** is clicked into place, it cannot be removed.



FINISHED PRODUCT



WARNING: This product is a toy designed to be used with dolls and stuffed animals only. Under no circumstances should product be used with real babies.